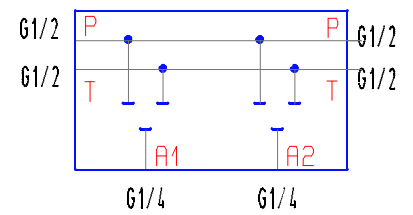
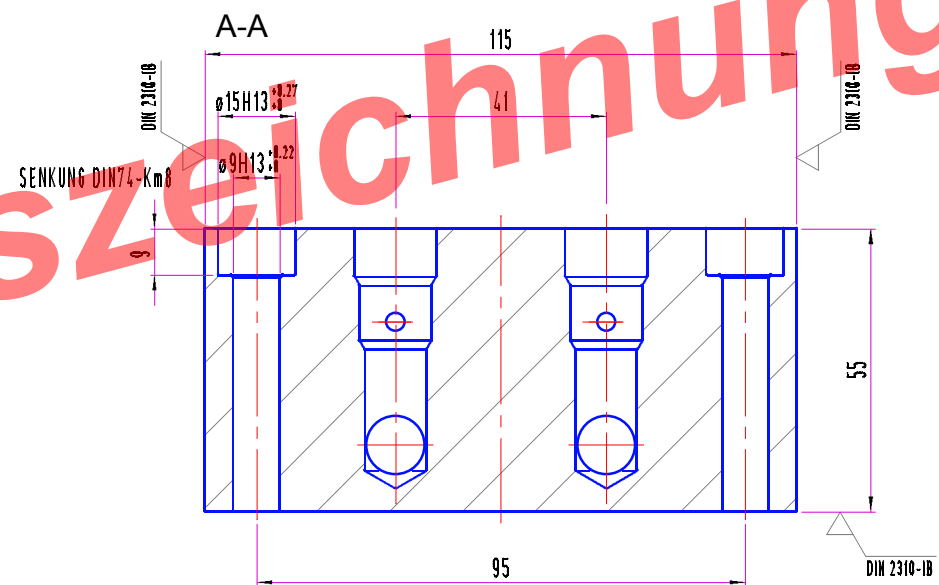
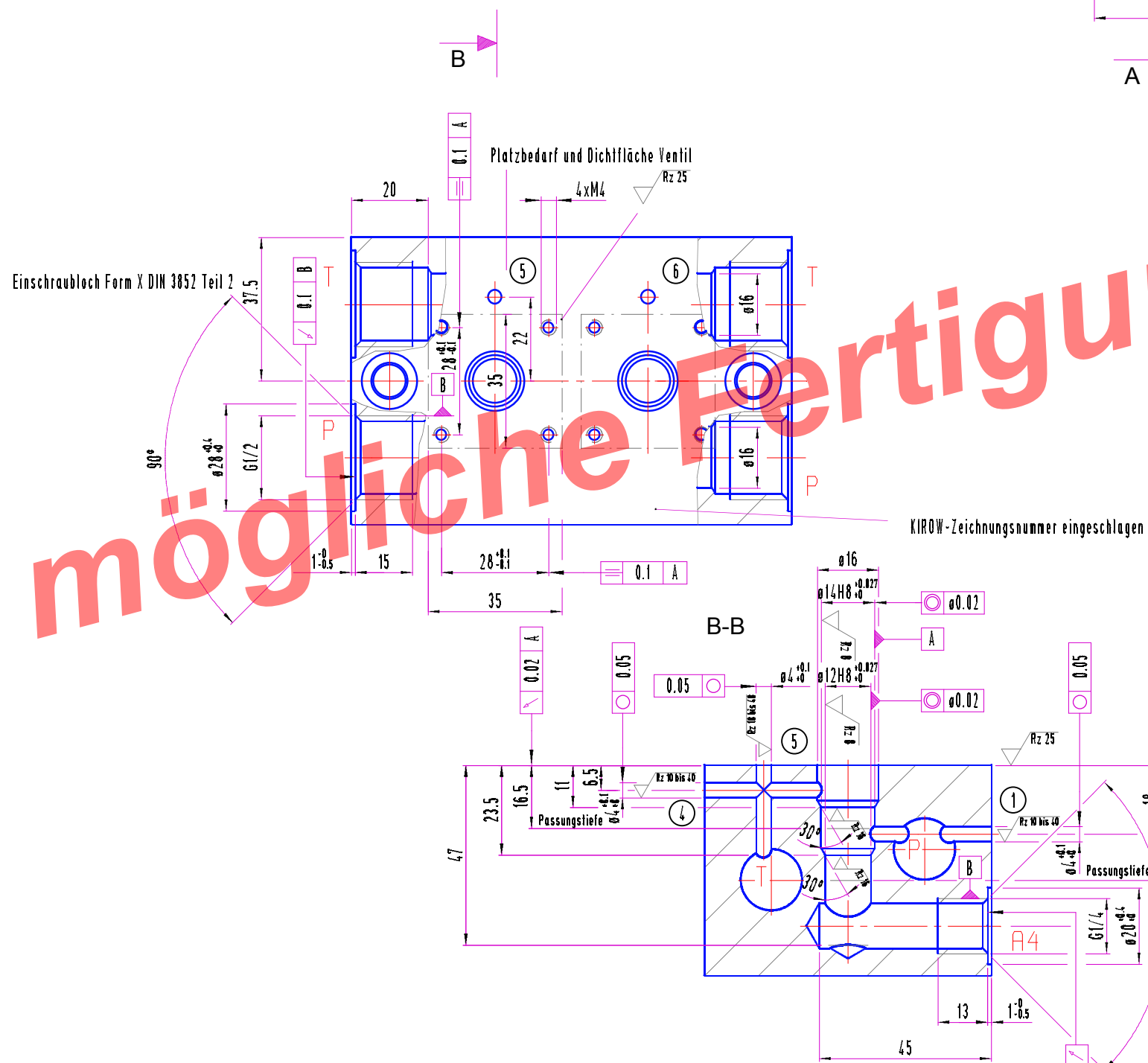
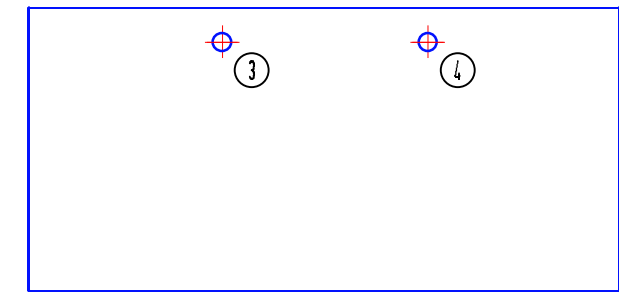
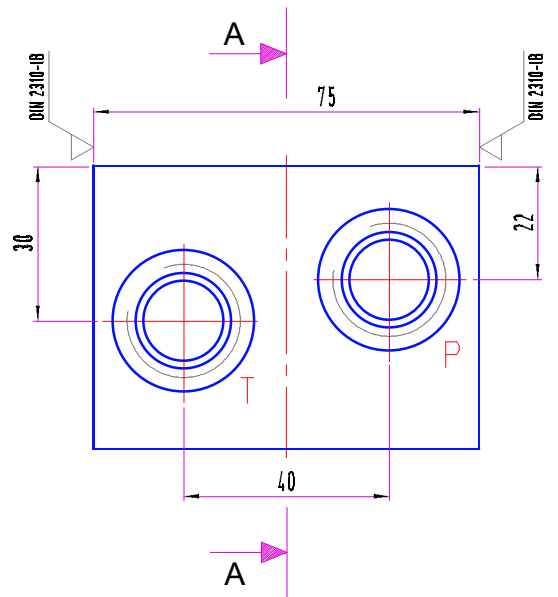
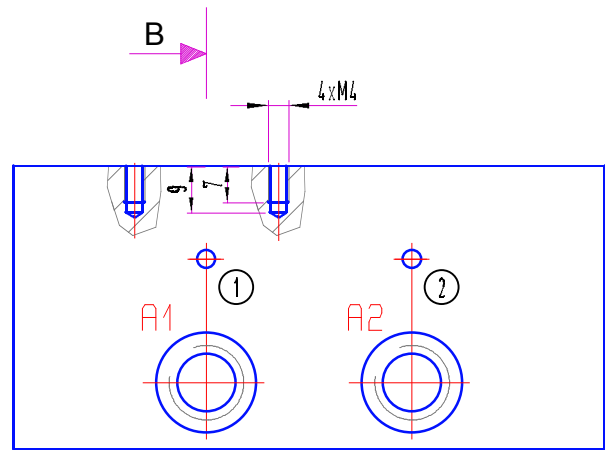


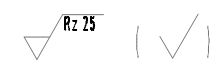
mögliche Fertigungszeichnung



Bohrungen ① ... ⑥ mit Expander-Dichtstopfen verschlossen

Anschlüsse:
 P = G 1/2"
 T = G 1/2"
 A1-A2 = G 1/4"

Nenndruck: 350bar



rel. Abw. für Maß ohne Toleranzangabe DIN ISO 2768/01 in EN ISO 13020		Maßstab	1:1	Gewicht
mittel		Werks:off Ha.bzeug	STE355/BL60	
Bearb.	Datum	Benennung		Fernsteuerplatte NG4-2F
		Zeichnungsnummer		
Zust.	Änderung	Datum	Name	B.att DWA2